

Despre noi

Inceputa ca o afacere de familie, MANOLO este o manufactura care se ocupa cu conceperea si producerea placutelor decorative de ciment, un produs cu o traditie de peste 150 ani. Obiectivul nostru este acela de a reinvia, de a pastra si transmite si generatiilor viitoare aceasta tehnica artizanală aproape uitată, placutele de ciment si motivele lor. In acelasi timp ne dorim sa cream un stil propriu, sa introducem motive noi, culori si combinatii cromatice unice.

Producerea placutelor de ciment este o meserie rara, in care productia se mai realizeaza inca manual, prin aceleasi procedee traditionale care se foloseau in trecut. Aceasta tehnologie bazata pe lucru manual confera o frumusetate si un farmec aparte acestui tip de finisaj.

Manufacturate in Romania si Maroc.

Scurt istoric

Placutele de ciment colorat sunt realizate manual, sunt decorative si colorate. Suprafetele acoperite cu ele se remarca prin colorit, durabilitate si un aspect sofisticat. Sunt utilizate si produse in intreaga lume, dar mai ales in Europa, nordul Africii si America. In lume, placutele decorative de ciment colorat au diferite denumiri: "placuta mozaic", "mozaic hidraulic", "placi de ciment", "placi hidraulice", "placi Portland", etc.

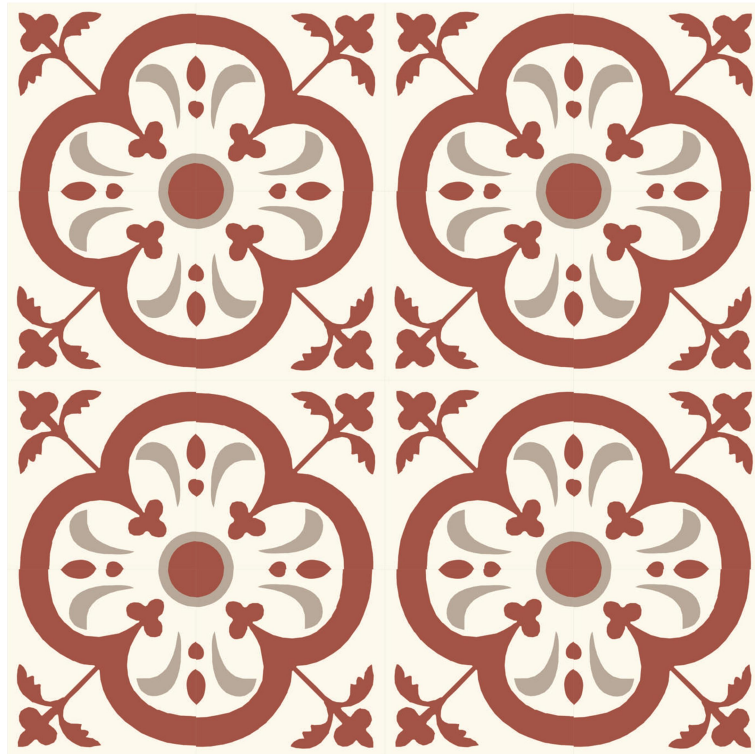
Prima mentionare a unei manufacturi care producea acest tip de placuta se refera la "Butsems Compania" si dateaza din 1857. Mai tarziu, datorita utilajelor moderne si capacitatii de productie in masa ale companiilor spaniole, folosirea acestui tip de finisaj a devenit foarte populara in Barcelona, fiind preferata si de Antoni Gaudi. Treptat, au devenit cunoscute si in America Latina si in Statele Unite ale Americii.

Dupa ce au fost utilizate intens la sfarsitul sec. 19 si inceputul sec. 20, acest tip de finisaj a fost aproape uitat odata cu industrializarea productiei de placi ceramice. In ultimii ani insa, arhitectii si designerii din intreaga lume le-au redescoperit utilitatea si farmecul aparte, folosindu-le cat mai des in proiectele lor.

Sunt utilizate atat in proiecte rezidentiale, cat si comerciale, de la resedinte particulare pana la hoteluri, cluburi, cafenele si restaurante. Noi le producem cu tehnologia si cu materialele originale, ceea ce le recomanda pentru utilizarea lor in proiectele de restaurare si amenajare a cladirilor vechi.

C – 20

20x20cm



C – 26

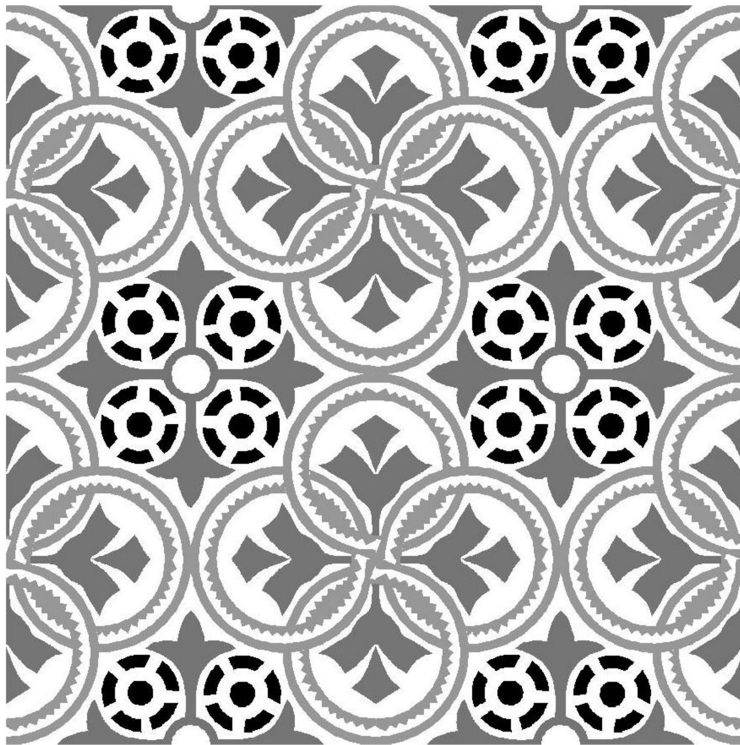
20x20cm



C – 28



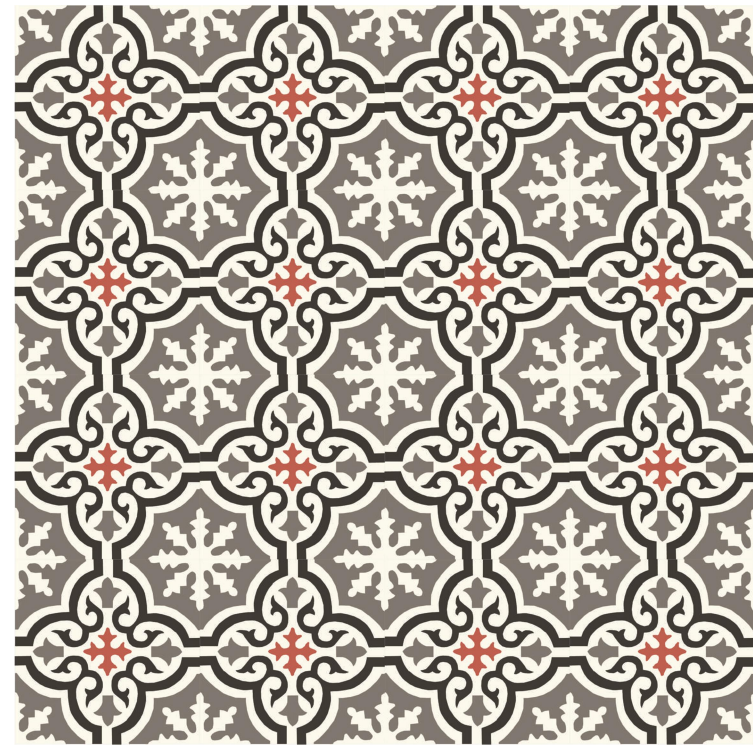
20x20cm



C – 36



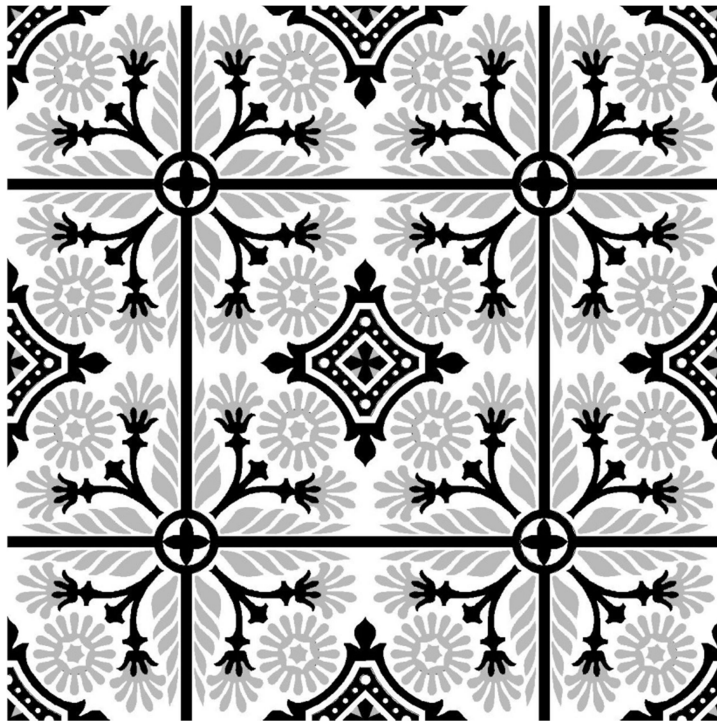
20x20cm



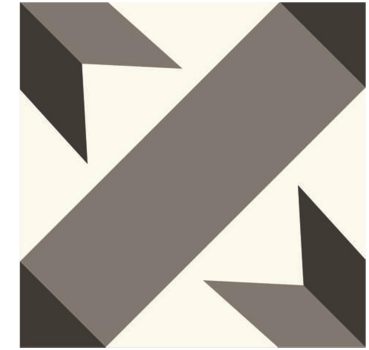
N – 990



20x20cm



C – 40

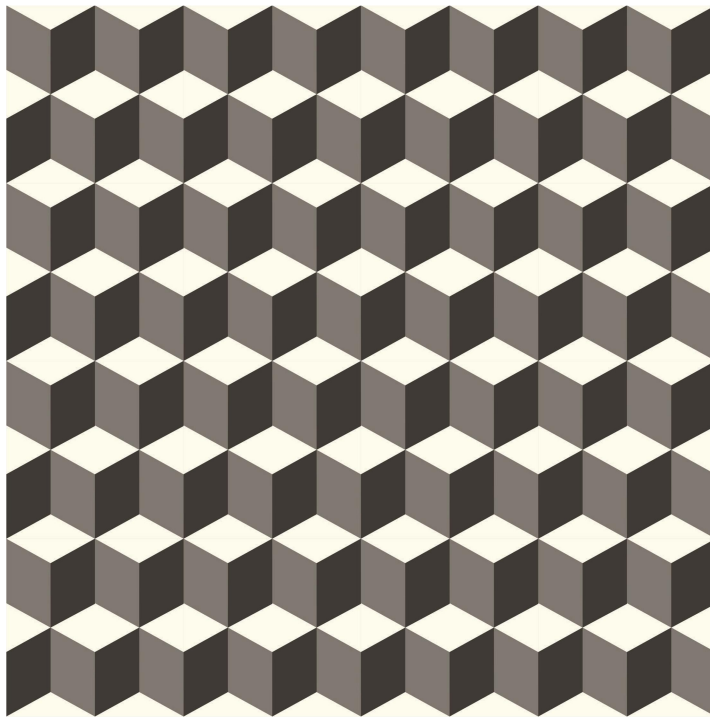
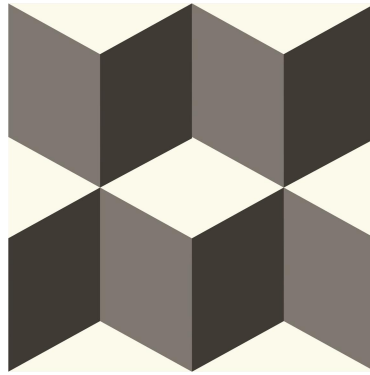


20x20cm

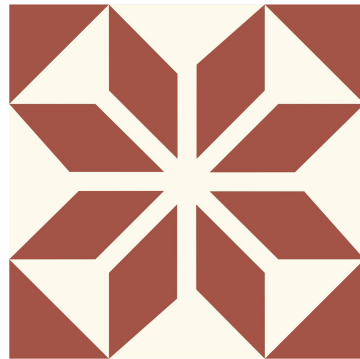


G - 55

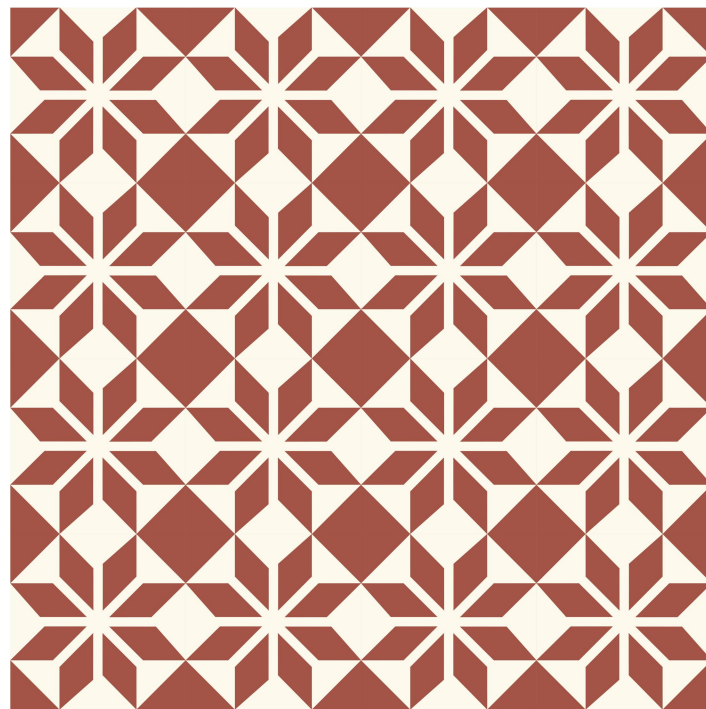
20x20cm



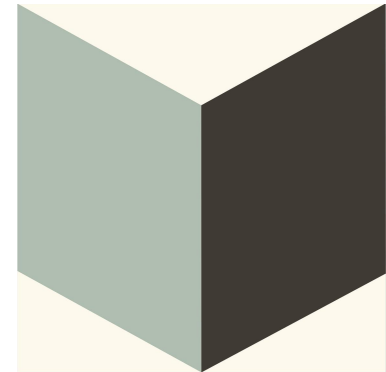
G - 58



20x20cm



G - 77

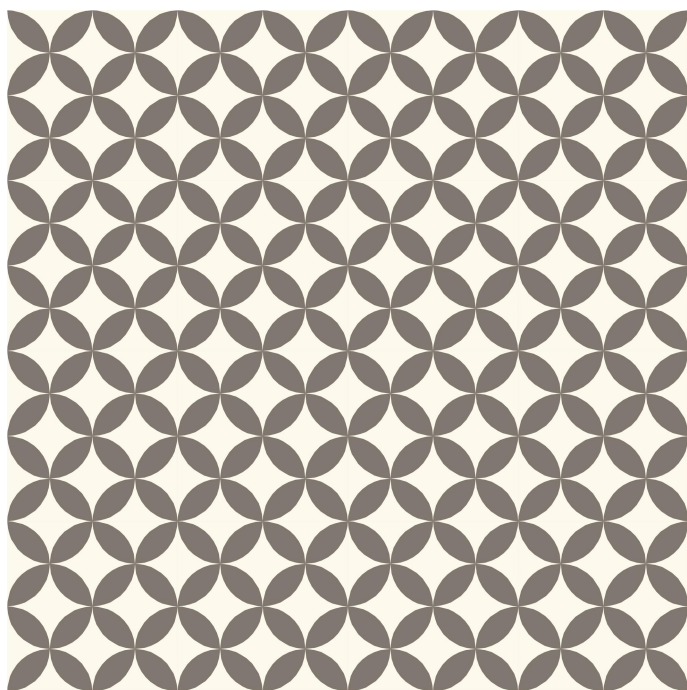


20x20cm



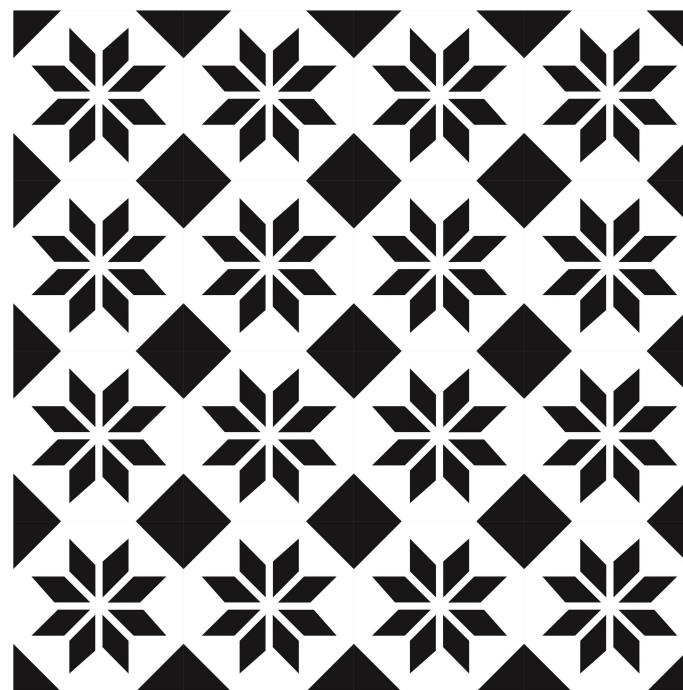
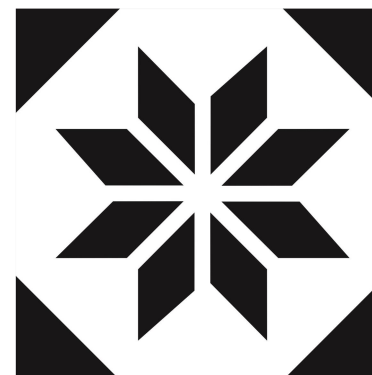
G – 82

20x20cm



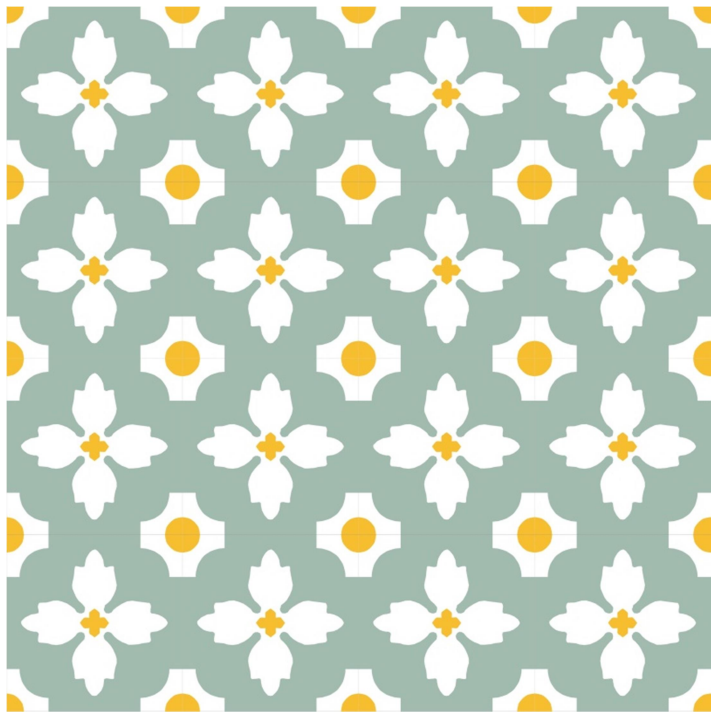
G – 700

20x20cm



N – 11

20x20cm



N – 16

20x20cm





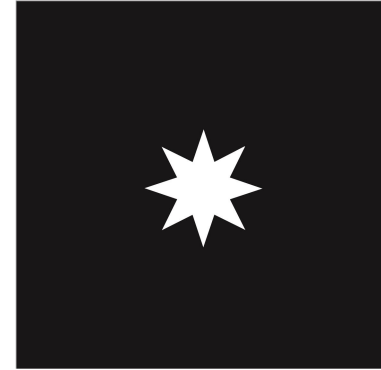
N - 100

20x20cm

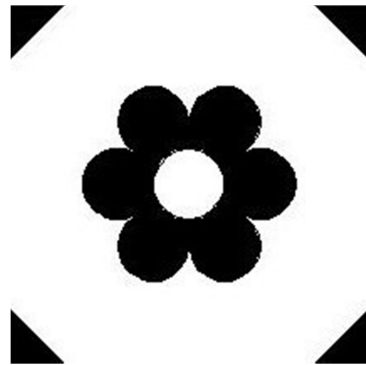


N - 910

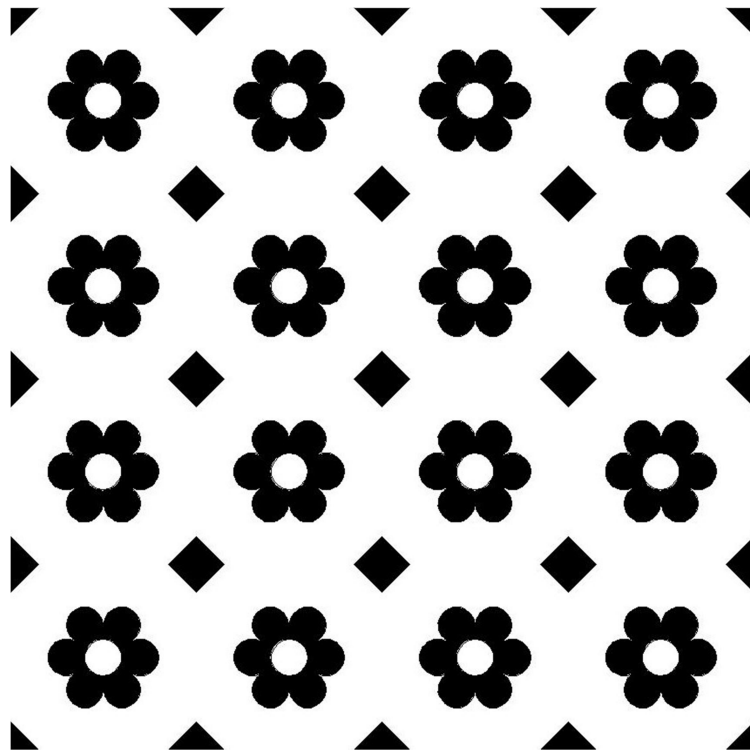
20x20cm



N - 111



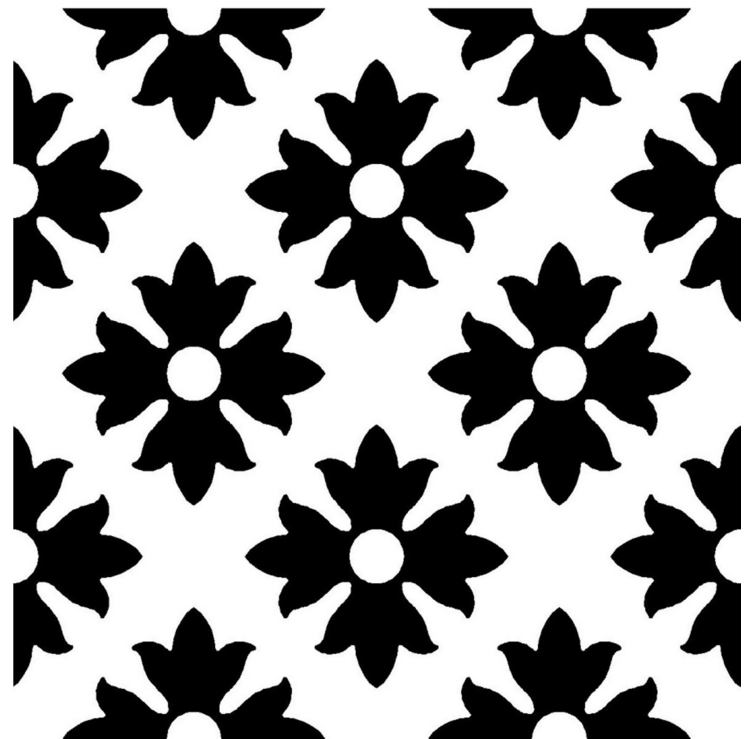
15x15cm



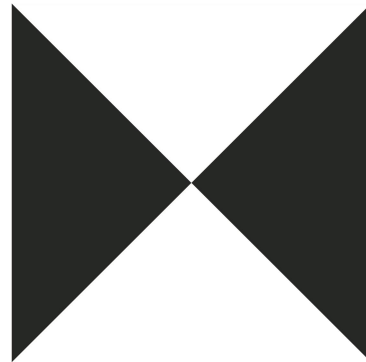
N - 115



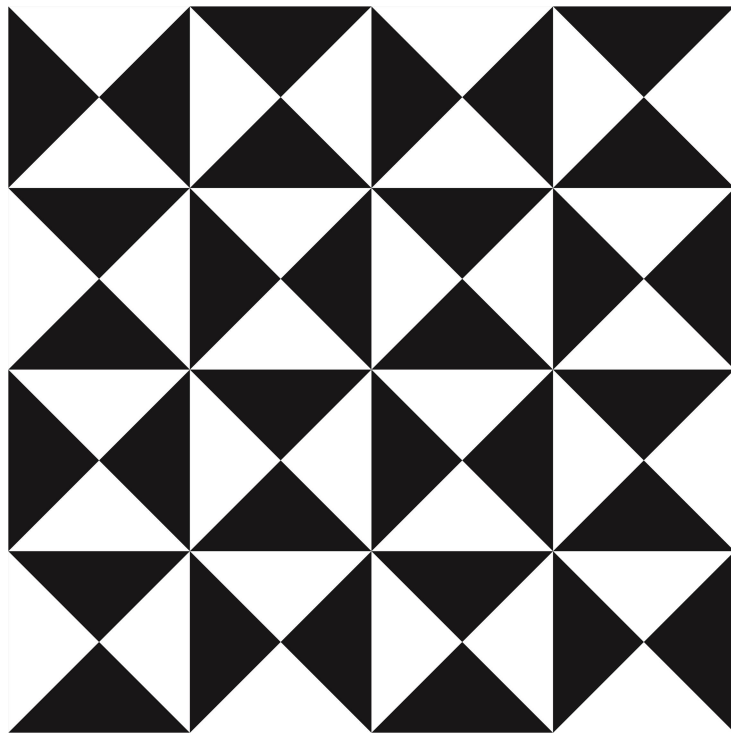
15x15cm



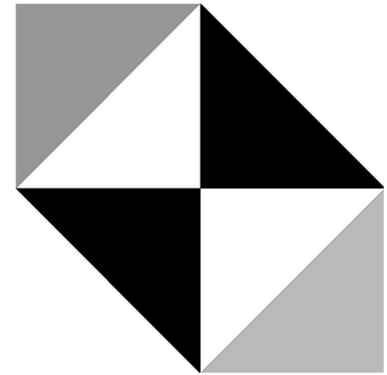
G - 540



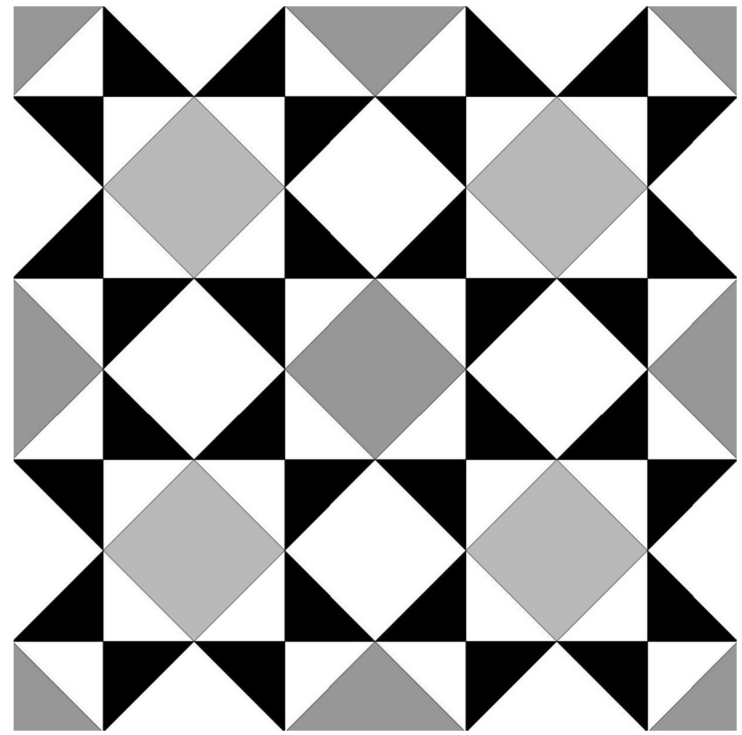
10x10cm



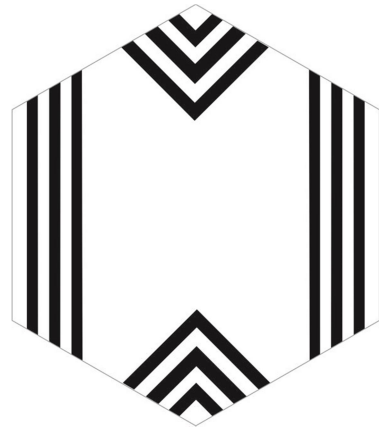
G - 590



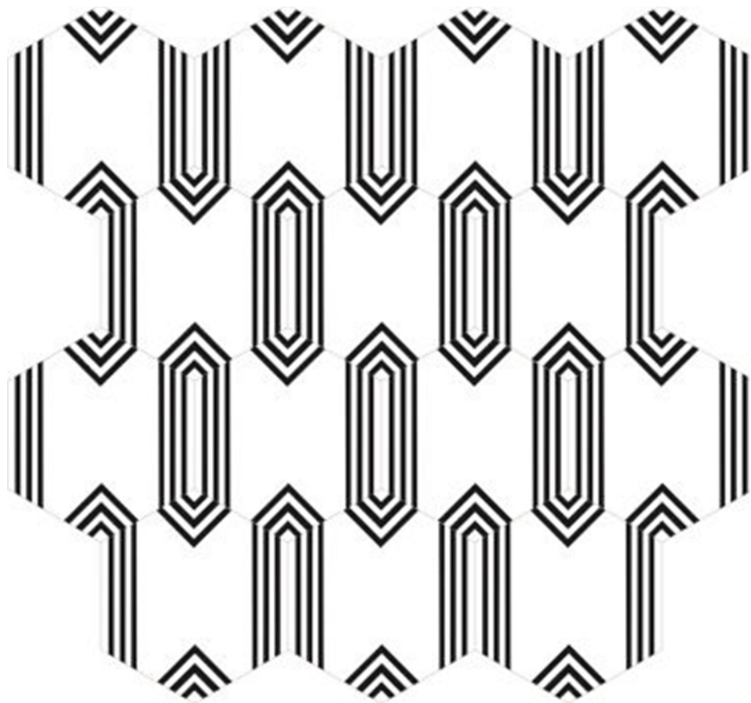
10x10cm



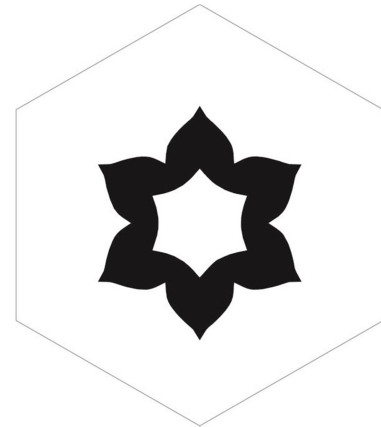
H - 660



23x20cm



H - 690



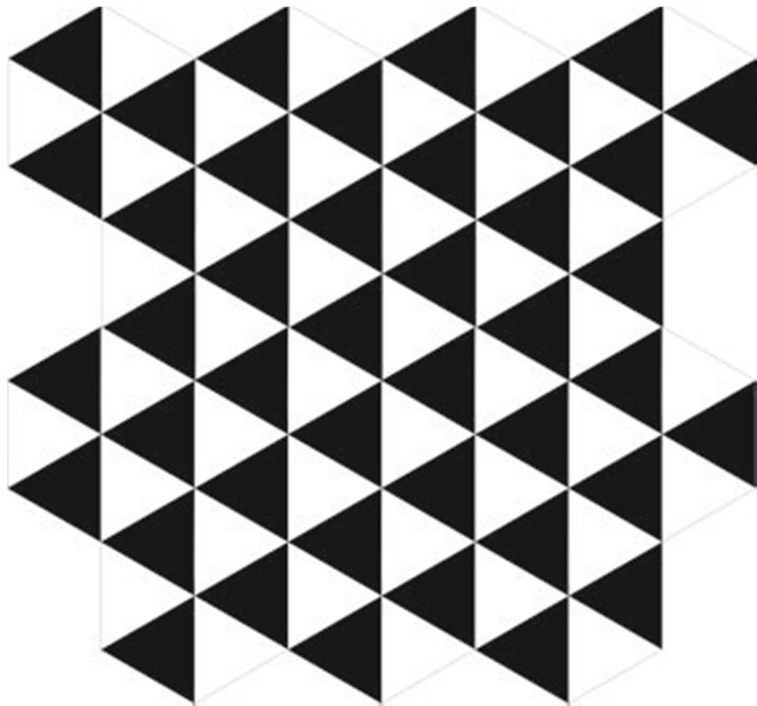
23x20cm



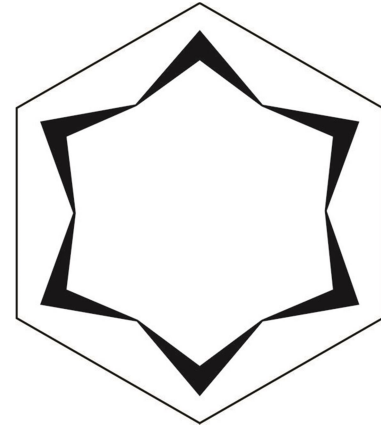
H - 630



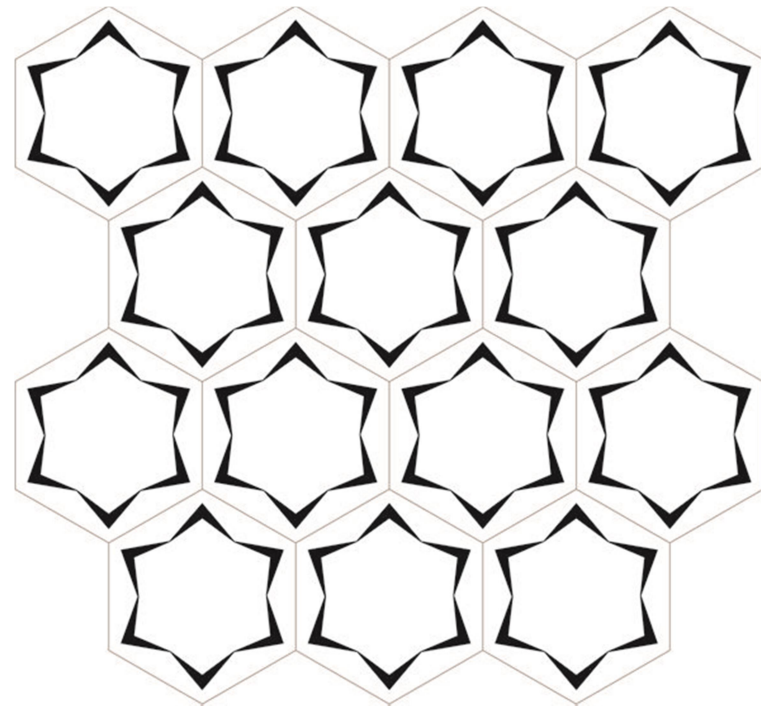
23x20cm



H - 695



23x20cm



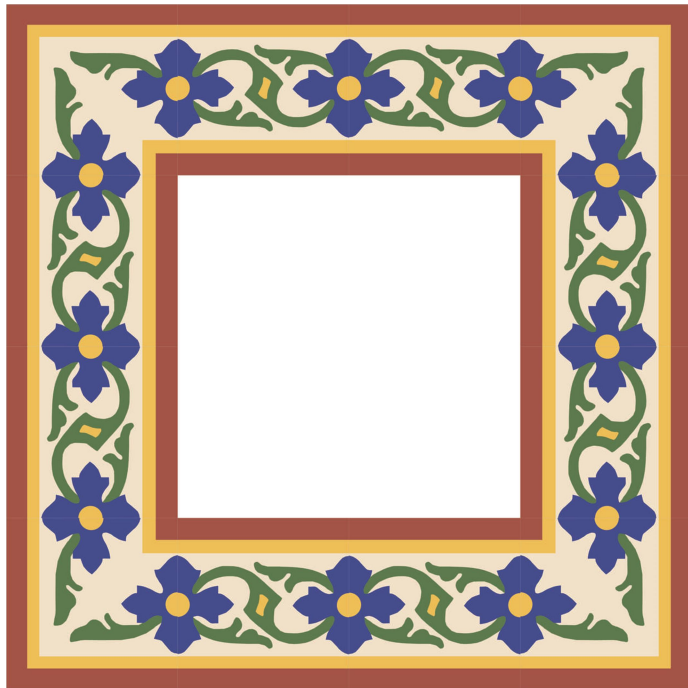
BORDURI SI PLINTA



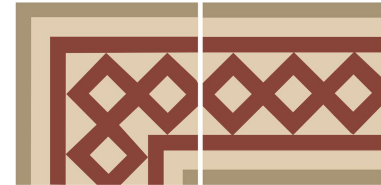
B - 230



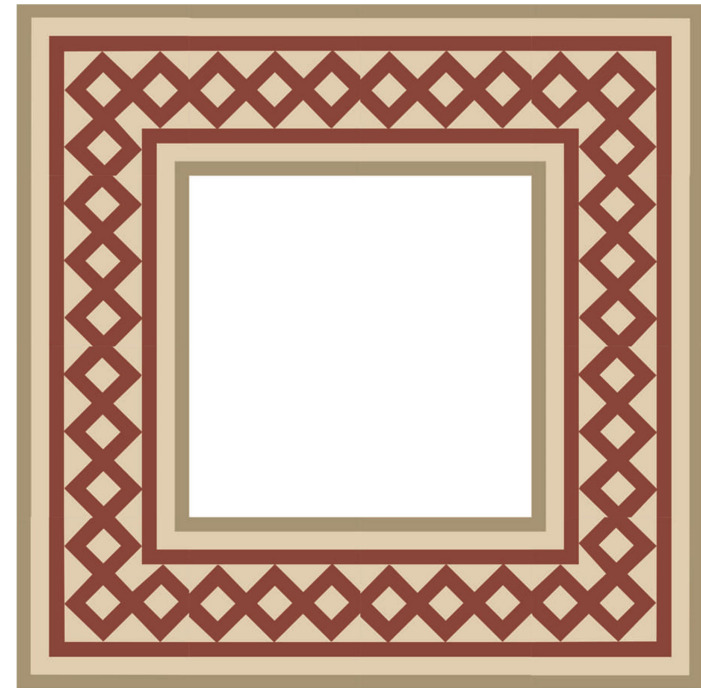
20x20cm



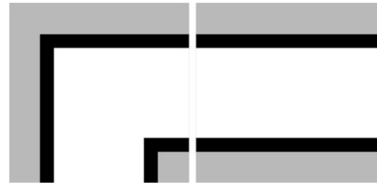
B - 210



20x20cm
15x15cm



B - 240

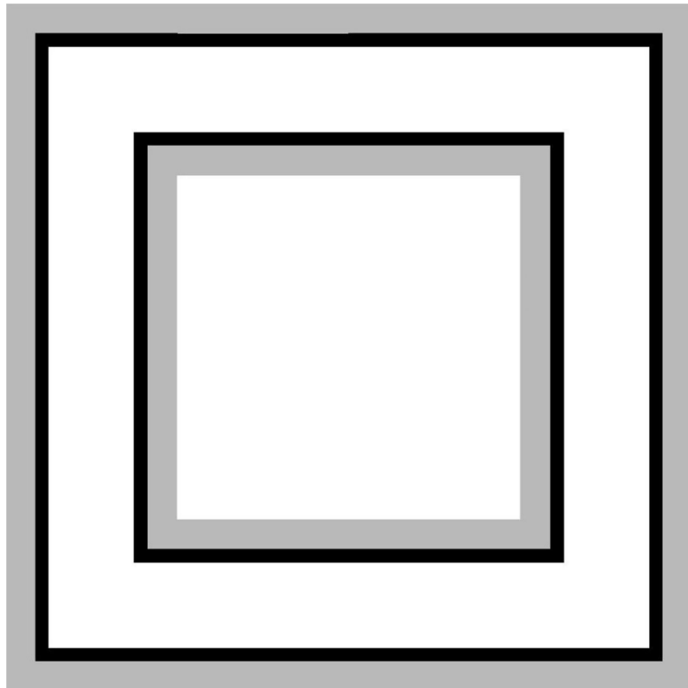


10x10cm

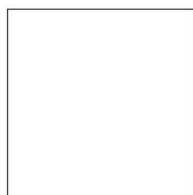
PLINTA



20x10cm



MONOCROM



PATRAT
20x20 cm
Grosime 17 mm
25 bucati/mp



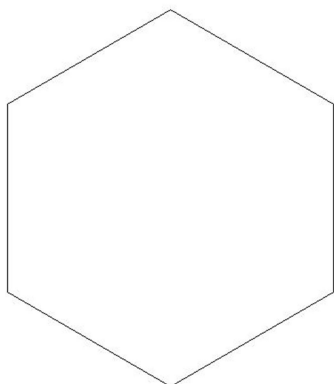
PATRAT
15x15 cm
Grosime 12 mm
44 bucati/mp



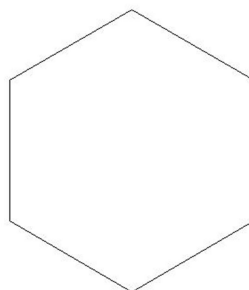
PATRAT
10x10 cm
Grosime 12 mm
100 bucati/mp



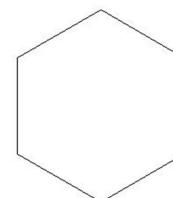
PATRAT
5x5 cm
Grosime 10 mm
400 bucati/mp



HEXAGON
20x23 cm
Grosime 14 mm
29 bucati/mp



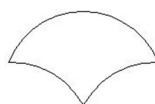
HEXAGON
15x17 cm
Grosime 12 mm
53 bucati/mp



HEXAGON
10x11.5 cm
Grosime 12 mm
118 bucati/mp



STICKS
5x20.4 cm
Grosime 16 mm
100 bucati/mp



SOLZ DE PESTE
10x16 cm
Grosime 12 mm
135 bucati/mp



PLINTA
10x20 cm
5 bucati/mL

